

Your Personalised Jaguar

JAGUAR E-PACE

E-PACE S D150 AWD Ingenium 2.0 litre 4 cylinder 150PS Turbocharged Diesel (Automatic) All Wheel Drive



THE ART OF PERFORMANCE



EXTERIOR



DESCRIPTION	
EXTERIOR FEATURES	
COLOURS	Fuji White
WHEELS	18" 9 spoke 'Style 9008'
TYRES	Summer tyres
BRAKES	Standard Brake Calipers
ROOF COLOUR	Body-coloured roof
ROOF TYPE	Fixed panoramic roof
GLASS	Clear glass
WINDOW SURROUNDS	Satin Black side window surround
HEADLIGHTS	LED headlights with signature DRL
TAILPIPES	Twin tailpipes with finishers



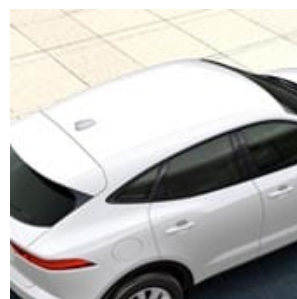
COLOURS



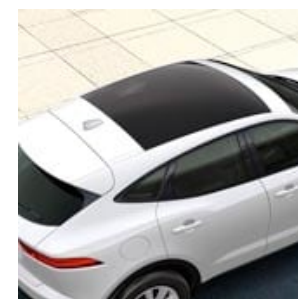
WHEELS



BRAKES



ROOF
COLOUR



ROOF TYPE



GLASS

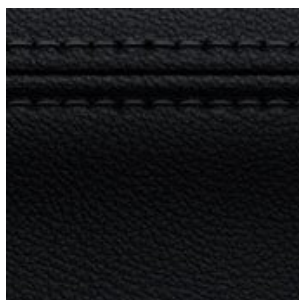
INTERIOR



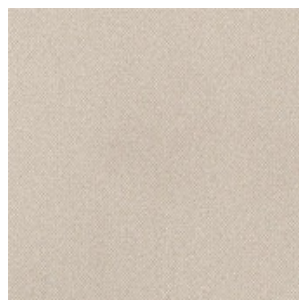
DESCRIPTION

INTERIOR FEATURES

TRIM	Ebony grained leather seats with Ebony/Ebony interior
SEAT FUNCTIONALITY	10-way electric front seats
HEADLINING	Light Oyster Morzine headlining
MATERIAL	Leather steering wheel
AUDIO	Sound System (6 Speakers 180W)



TRIM



HEADLINING



MATERIAL



AUDIO

OPTIONS

DESCRIPTION

EXTERIOR FEATURES

Powered tailgate

-

INTERIOR FEATURES

Carpet mats

-

STANDARD FEATURES

OPTION PACKS

Connect Pro Pack

EXTERIOR FEATURES

Automatic headlights

Rear fog lights

Manual tailgate

Chrome side vents

Grained Black grille with Chrome surround

Body-coloured bumpers

Grained Black door claddings

Auto-dimming, power fold, heated door mirrors with approach lights

Electric windows with one-touch open/close and anti-trap

Heated rear window

Rain sensing windscreen wipers

Approach illumination (via Remote) and follow me home lighting

Tailgate spoiler

JAGUAR script and leaper

3-flash lane change indicators

WHEELS AND OPTIONS

Tyre Repair System

Tyre Pressure Monitoring System (TPMS)

INTERIOR FEATURES

Loadspace cover

Loadspace elasticated side-strap

Loadspace light

Luggage tie-downs in loadspace

Luggage hooks in loadspace

Loadspace storage net

INTERIOR FEATURES

Two-zone Climate Control	Centre console cubby box	Twin front cupholders with cover
Centre console with armrest	Sunvisors with illuminated vanity mirrors	Start-up sequence with movement, dials and lighting
Outside temperature gauge	Second row air vents	Interior lighting
Analogue Dials with Central TFT Display	Auto-dimming interior rear view mirror	

SEATING AND INTERIOR TRIM

60:40 second row seat fold	Metal treadplates with Jaguar branding
----------------------------	--

DYNAMICS

Hill Launch Assist	JaguarDrive Control	Speed proportional steering
Electric Power Assisted Steering (EPAS)	Dynamic Stability Control (DSC)	Electric Parking Brake (EPB)
Diesel misfuelling protection device	Push Button Start	

INFOTAINMENT

Navigation Pro	10" Touch Pro	AM/FM radio
Dynamic Volume Control	Voice control	Power sockets

INFOTAINMENT

ECO driving style assistant

Trip computer

Bluetooth® connectivity

DRIVER ASSISTANCE

Park Pack

Emergency Braking

Cruise Control and Speed Limiter

Traffic Sign Recognition and Adaptive Speed Limiter

Driver Condition Monitor

Lane Keep Assist

Rear Camera

Front and Rear Parking Aid

Passive suspension

SAFETY

Anti-Lock Braking System (ABS)

Electronic Brake-force Distribution (EBD)

Emergency Brake Assist

Front airbags, with passenger seat occupant detector

Front side airbags

Full length side window curtain airbag

Standard alarm

Customer Configurable Autolock

Rear ISOFIX

Power operated child locks

Seat belt reminder

Passive front head restraints

CONVENIENCE

Remote

TECHNICAL SPECIFICATIONS

VEHICLE LENGTHS

Overall length inc. number plate plinth (mm)	4,411
Wheelbase (mm)	2,681

VEHICLE HEIGHTS & WIDTHS

Overall width inc. mirrors (mm)	2,088
Overall width with mirrors folded in (mm)	1,984
Front track (mm)	1,625
Rear track (mm)	1,624
Height (mm)	1,649

HEADROOM

Maximum Front headroom without Fixed Panoramic Roof fitted (mm)	976
Maximum Rear headroom without Fixed Panoramic Roof fitted (mm)	974
Maximum Front headroom with Fixed Panoramic Roof fitted (mm)	996
Maximum Rear headroom with Fixed Panoramic Roof fitted (mm)	970

LEGROOM

Maximum front legroom (mm)	1,030
Maximum rear legroom (mm)	892

LOADSPACE CAPACITY - REAR SEATS UPRIGHT

Height (mm)	705
Width (mm)	1,311
Loadspace volume with Tyre Repair System (Litres)	577
Loadspace volume with spare wheel (Litres)	484
Loadspace width between arches (mm)	1,057
Length at floor (mm)	806

LOADSPACE CAPACITY - REAR SEATS FORWARD

Height (mm)	705
Width (mm)	1,311
Loadspace volume with Tyre Repair System (Litres)	1,234
Loadspace volume with spare wheel (Litres)	1,141
Loadspace width between arches (mm)	1,057

LOADSPACE CAPACITY - REAR SEATS FORWARD

Length at floor (mm)	1,568
----------------------	-------

OBSTACLE CLEARANCE

Standard ride height - Front Axle (mm)	265
--	-----

Standard ride height - Rear Axle (mm)	215
---------------------------------------	-----

TURNING CIRCLE

Kerb-to-kerb (m)	11.4
------------------	------

Wall-to-wall (m)	11.9
------------------	------

Turns lock-to-lock	2.31
--------------------	------

ENGINES

Capacity (cc)	1,999
---------------	-------

Maximum Power EEC-PS (kW)	150 (110)
---------------------------	-----------

@ rev/min	3,500
-----------	-------

Maximum torque EEC-Nm	380
-----------------------	-----

@ rev/min.	1,750
------------	-------

Transmission	9-speed Automatic
--------------	-------------------

PERFORMANCE

0-100 km/h (seconds)	10.5
----------------------	------

0-60 mph (seconds)	9.9
--------------------	-----

Top speed km/h (mph)	193 (120)
----------------------	-----------

FUEL CONSUMPTION

Combined l/100km (mpg)	6.0 (47.1)
------------------------	------------

CO ₂ (g/km)	158
------------------------	-----

Tank capacity (litres approx.)	55.7 / 66.5
--------------------------------	-------------

WEIGHT

Weight (Unladen EU*) (kg) - *includes a 75kg driver, full fluids and 90% fuel	1,843
---	-------

Gross vehicle weight (kg)	2,400
---------------------------	-------

TOWING

Unbraked trailer (kg)	750
-----------------------	-----

Maximum towing (kg)	1,800
---------------------	-------

Maximum coupling point/nose weight (kg)	100
---	-----

Maximum vehicle and trailer combination/Gross Train Weight (kg)	4,200
---	-------

YOUR CONFIGURATION

https://rules.config.jaguar.com/jag2/r/summary/_/en_xi/e-pace_k19/3jfc/a-150d-a-awd_a-e-pace_a-sp1/n-037aw_n-041cx_n-070av_n-079aj

26/02/2019 14:45



Vehicles shown are from the Jaguar Global range. Specifications, options and availability will vary between markets and should be verified with your local Jaguar Retailer. The figures provided are official EU Test Figures. For comparison purposes only. Real world figures may differ.

WLTP is the new official EU test used to calculate standardised fuel consumption and CO₂ figures for passenger cars. It measures fuel, energy consumption, range and emissions. This is designed to provide figures closer to real-world driving behaviour. It tests vehicles with optional equipment and with a more demanding test procedure and driving profile.

The figures provided are NEDC2 calculated from official manufacturer's WLTP tests in accordance with EU legislation. For comparison purposes only. Real world figures may differ. CO₂ and fuel economy figures may vary according to wheel fitment and optional extras fitted. NEDC2 are figures calculated using a Government formula from WLTP figures equivalent to what they would have been under the old NEDC test. The correct tax treatment can then be applied.

±TEL (Test Energy Low) and TEH (Test Energy High) figures are shown as a range under WLTP testing measures. TEL refers to the lowest/most economical figures (with the lightest set of options). TEH refers to the highest/least economical figures (with the heaviest set of options). WLTP legislation dictates that where there is 5g CO₂ variance between TEL and TEH, only the TEH is declared.

- [International Sites](#)
- [Sitemap](#)
- [Terms and Conditions](#)
- [Cookie and Privacy Policy](#)
- [Accessibility](#)

© Jaguar Land Rover Limited 2019: Registered office: Abbey Road, Whitley, Coventry CV3 4LF. Registered in England No: 1672070

